

Silva

Heavy oil tank alu 31.3 m3 / 1 comp

GENERAL

ID number	0072641
Brand	Silva
Type	Heavy oil tank alu 31.3 m3 / 1 comp
Chassis number	VS9CAN301VR072641
1st Registration Date	18-07-1997
Country of registration	ES
Dimensions	1095x250x350 cm

POWERTRAIN

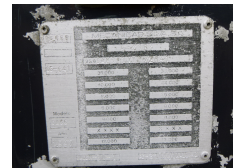
ABS	✓
-----	---

CHASSIS

Empty weight	4700 kg
Gross weight	36000 kg
Chassis height	110 cm
Fifth wheel height	120 cm
Kingpin diameter	2 inch

TYRES

Tyre size axle 1	385/65R22.5
Tyre size axle 2	385/65R22.5
Tyre size axle 3	385/65R22.5



ADDITIONAL INFO

Heavy oil tank, Aluminium, Bulk capacity 31.3 m3 (31350 liters), 1 Compartment, Insulated, ABS, Ror axles, Air suspension, 1st axle lifting axle, Drum brakes, Shipment dimensions: 1095x250x350 cm.

AXLES

Number of axles	3
Brand axles	Ror
Drum brake	✓
Suspension axle 1	Air suspension
Suspension axle 2	Air suspension
Suspension axle 3	Air suspension
Lift axle Axle 1	✓

SUPERSTRUCTURE

Make superstructure	Silva
---------------------	-------

TANK

Volume (Liters)	31350 L
Number of compartments	1
Tank material	Aluminium
Insulated	✓
Test pressure	0.39 bar
Maximum work pressure	0.22 bar
Bitumen	✓