

# TCL

## Food tank inox 30 m3 / 1 comp

### GENERAL

|                         |                               |
|-------------------------|-------------------------------|
| ID number               | 0010729                       |
| Price (excl. VAT)       | € 18.500                      |
| Brand                   | TCL                           |
| Type                    | Food tank inox 30 m3 / 1 comp |
| Chassis number          | 10729                         |
| 1st Registration Date   | 03-10-2000                    |
| Country of registration | UK                            |
| Dimensions              | 1100x250x370                  |

### POWERTRAIN

|     |   |
|-----|---|
| ABS | ✓ |
|-----|---|

### CHASSIS

|                    |       |
|--------------------|-------|
| Gross weight       | 36500 |
| Fifth wheel height | 120   |

### TYRES

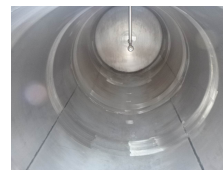
|                  |             |
|------------------|-------------|
| Tyre size axle 1 | 385/65R22.5 |
| Tyre size axle 2 | 385/65R22.5 |
| Tyre size axle 3 | 385/65R22.5 |

### AXLES

|                   |                |
|-------------------|----------------|
| Number of axles   | 3              |
| Brand axles       | Saf            |
| Drum brake        | ✓              |
| Suspension axle 1 | Air suspension |
| Suspension axle 2 | Air suspension |
| Suspension axle 3 | Air suspension |

### SUPERSTRUCTURE

|                     |     |
|---------------------|-----|
| Make superstructure | TCL |
|---------------------|-----|



## TANK

|                              |       |
|------------------------------|-------|
| Volume (Liters)              | 30000 |
| Number of compartments       | 1     |
| Volume compartments (Liters) | 30000 |
| Tank material                | Inox  |
| Insulated                    | ✓     |

## ADDITIONAL INFO

RILLAND / Food tank, Insulated stainless steel (inox), Capacity 30000 litres, 1 Compartment, ABS, Air suspension, SAF axles, Drum brakes, Aluminium rims, Internal cleaning system (4 sprinklers), Shipment dimensions 1100x250x370 cm.