

Montracon

Frigo trailer + Carrier Vector 1550

GENERAL

ID number	0113123
Brand	Montracon
Type	Frigo trailer + Carrier Vector 1550
Chassis number	SMRR3AXXXFN113123
1st Registration Date	01-01-2015
Country of registration	UK
Dimensions	1410x250x415 cm

POWERTRAIN

ABS	✓
-----	---

CHASSIS

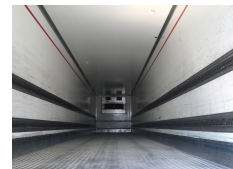
Gross weight	38000 kg
Kingpin diameter	2 inches
Kingpin height	125 cm

TYRES

Tyre size axle 1	385/65R22.5
Tyre size axle 2	385/65R22.5
Tyre size axle 3	385/65R22.5

AXLES

Number of axles	3
Brand axles	Bpwecoplus
Drum brake	✓
Suspension axle 1	Air suspension
Suspension axle 2	Air suspension
Suspension axle 3	Air suspension



ADDITIONAL INFO

Refrigerated closed box, Dimensions 1340x248x260 cm, Floor height 130 cm, Carrier Vector 1550 frigo engine (diesel and electric), Logicold digital hour gauge, Datacold ticket printer, Dhollandia DHSKS.20 tuck away tail lift (max. 1500 kg), Aluminium extendable rear bumper, ABS, Air suspension, BPW Eco Plus axles, Drum brakes, Max. gross trailer weight 38000 kg, Shipment dimensions 1410x250x415 cm

SUPERSTRUCTURE

Make superstructure	Montracon
Floor height	130 cm

Gesloten bak	✓
Dimensions superstructure	1340x248x260 cm

KOELSYSTEEM / FRIGO

Koelmotor diesel	✓
Koelmotor diesel en elektrisch	✓

Frigo engine brand	Carrier
Frigo engine type	Vector 1550

TAILLIFT

Brand/Type taillift	Dhollandia
Ondervouw laadklep	✓
Capaciteit laadklep	1500 kg