

Schmitz

Frigo trailer + Carrier Vector 1550

GENERAL

ID number	E0131406
Price (excl. VAT)	€ 19.000
Brand	Schmitz
Type	Frigo trailer + Carrier Vector 1550
Chassis number	WSM00000005131406
1st Registration Date	01-01-2014
Country of registration	UK
Dimensions	1400x250x400 cm

POWERTRAIN

ABS	✓
-----	---

CHASSIS

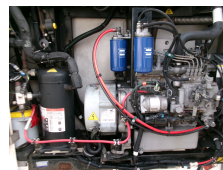
Gross weight	39000 kg
Chassis height	100 cm
Fifth wheel height	120 cm
Kingpin diameter	2 inch

TYRES

Tyre size axle 1	385/65R22.5
Tyre size axle 2	385/65R22.5
Tyre size axle 3	385/65R22.5

AXLES

Number of axles	3
Brand axles	Schmitz
Disc brake	✓
Suspension axle 1	Air suspension
Suspension axle 2	Air suspension
Suspension axle 3	Air suspension



ADDITIONAL INFO

NON-DUTY FREE VEHICLE, REQUIRES CUSTOMS CLEARANCE // Carrier Vector 1550 diesel + electric frigo engine, Diesel engine hours 8481, Ticket machine, Insulated closed box, Box dimensions 1340x250x260 cm, Floor height 130 cm, ABS, Air suspension, Schmitz axles, Disc brakes, Tyres 385/65R22.5, Shipment dimensions 1400x250x400 cm

SUPERSTRUCTURE

Make superstructure	Schmitz
Floor height	130 cm
Gesloten bak	✓
Dimensions superstructure	1340x250x260 cm

KOELSYSTEEM / FRIGO

Koelmotor diesel	✓
Koelmotor diesel en elektrisch	✓
Frigo engine brand	Carrier
Frigo engine type	Vector 1550
Draaiuren op diesel	8481
Working hours (electric)	1394