

L.A.G.

Chemical tank inox 30 m3 / 1 comp + pump

GENERAL

ID number	0800958
Brand	L.A.G.
Type	Chemical tank inox 30 m3 / 1 comp + pump
Chassis number	***YB4D0138349800958
1st Registration Date	01-01-1998
Country of registration	UK
Dimensions	1180x250x350 cm

POWERTRAIN

ABS 


CHASSIS

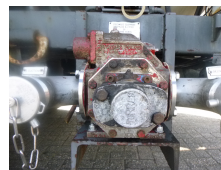
Gross weight	39000 kg
Chassis height	100 cm
Kingpin height	120 cm
Kingpin diameter	2 inches
Aluminium rims	

TYRES

Tyre size axle 1	385/65R22.5
Tyre size axle 2	385/65R22.5
Tyre size axle 3	385/65R22.5

AXLES

Number of axles	3
Brand axles	Ror
Drum brake	
Suspension axle 1	Air suspension
Suspension axle 2	Air suspension
Suspension axle 3	Air suspension



ADDITIONAL INFO

Chemical tank, Insulated stainless steel (inox), Capacity 37500 litres, 1 Compartment, Torres hydraulic pump (suction and discharge), Air pressure discharge pipe, Test pressure 4 bar, Max. working pressure 2 bar, ABS, Air suspension, Drum brakes, ROR axles, Alloy wheels, Shipment dimensions 1180x250x350 cm

TANK

Volume (Liters)	30000
Number of compartments	1
Volume compartments (Liters)	30000
Tank material	Inox
Pump	✓
Pump -brand and type	Torres
Insulated	✓
Test pressure	4 bar
Maximum work pressure	2 bar
Chemicals	✓