

Crane Fruehauf

Fuel tank alu 28 m3 / 5 comp + pump

GENERAL

ID number	0443101
Brand	Crane Fruehauf
Type	Fuel tank alu 28 m3 / 5 comp + pump
Chassis number	SFRTAGR02YT443101
1st Registration Date	01-01-2000
Country of registration	UK
Dimensions	924x250x345 cm

POWERTRAIN

ABS	✓
-----	---

CHASSIS

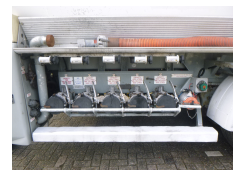
Gross weight	30000 kg
Chassis height	100 cm
Kingpin diameter	2 inches
Kingpin height	120 cm
Aluminium rims	✓

TYRES

Tyre size axle 1	385/65R22.5
Tyre size axle 2	385/65R22.5

AXLES

Number of axles	2
Brand axles	Ror
Drum brake	✓
Suspension axle 1	Air suspension
Suspension axle 2	Air suspension
Steering axle, Axle 2	✓



ADDITIONAL INFO

Aluminium fuel tank, Capacity 28000 litres, 5 Compartments (7000; 6000; 3000; 6000; 6000), LectroCount counter, LectroCount Printer, Hose reel, Vapour recovery, Optical overload sensor, Air suspension, ROR axles, Steering rear axle, Axle lift, Drum brakes, Alloy wheels, Shipment dimensions 9240x250x345 cm.

TANK

Volume (Liters)	28000
Number of compartments	5
Volume compartments (Liters)	7000; 6000; 3000; 6000; 6000
Tank material	Aluminium
Pump	✓
Pump -brand and type	Drum
Hoses	✓
Vapour recovery	✓
Optical overload sensor	✓
Heating type	Steam
Fuel	✓