

# Charles Roberts

Fuel tank alu 34 m3 / 6 comp + pump

## GENERAL

ID number	0048553
Brand	Charles Roberts
Type	Fuel tank alu 34 m3 / 6 comp + pump
Chassis number	***48553
1st Registration Date	01-01-1989
Country of registration	UK
Dimensions	1165x250x350 cm

## POWERTRAIN

ABS	✓
-----	---

## CHASSIS

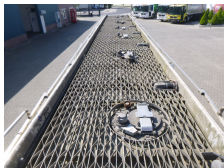
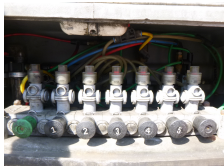
Empty weight	6500 kg
Gross weight	35000 kg
Kingpin height	120 cm

## TYRES

Tyre size axle 1	385/65R22.5
Tyre size axle 2	385/65R22.5
Tyre size axle 3	385/65R22.5

## AXLES

Number of axles	3
Brand axles	Ror
Drum brake	✓
Suspension axle 1	Air suspension
Suspension axle 2	Air suspension
Suspension axle 3	Air suspension
Lift axle Axle 1	✓



## ADDITIONAL INFO

Aluminium fuel tank, Capacity 34000 litres, 6 Compartments (6000; 5000; 5000; 4000; 7000; 7000), Hydraulic discharge pump, Vapour recovery, Optical overload sensor, NO ABS, Air suspension, ROR axles, Drum brakes, Lift axle (1st), Shipment dimensions 1165x250x350 cm

TANK

Volume (Liters)	34000
Number of compartments	6
Volume compartments (Liters)	6000; 5000; 5000; 4000; 7000; 7000
Tank material	Aluminium
Pump	✓
Vapour recovery	✓
Optical overload sensor	✓
Fuel	✓