

# Crane Fruehauf

## Chemical tank inox 35 m3 / 3 comp

### GENERAL

ID number	0749101
Brand	Crane Fruehauf
Type	Chemical tank inox 35 m3 / 3 comp
Chassis number	ST749101
1st Registration Date	02-01-1995
Country of registration	UK
Dimensions	1160x250x380

### POWERTRAIN

ABS	✓
-----	---

### CHASSIS

Empty weight	8080
Gross weight	37000
Fifth wheel height	120

### TYRES

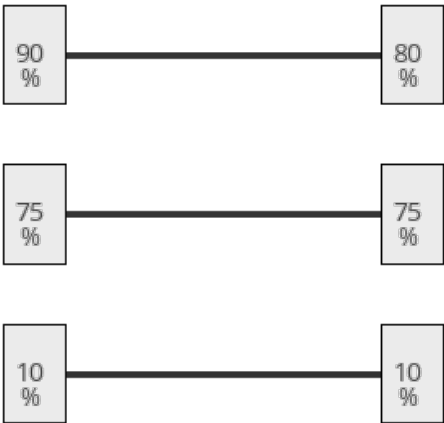
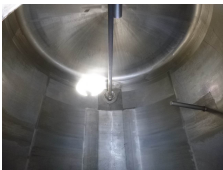
Tyre size axle 1	385/65R22.5
Tyre size axle 2	385/65R22.5
Tyre size axle 3	385/65R22.5

### AXLES

Number of axles	3
Brand axles	Fruehauf
Drum brake	✓
Suspension axle 1	Air suspension
Suspension axle 2	Air suspension
Suspension axle 3	Air suspension

### SUPERSTRUCTURE

Make superstructure	Crane Fruehauf
---------------------	----------------



TANK

Volume (Liters)	35000
Number of compartments	3
Volume compartments (Liters)	7500; 20000; 7500
Material code	Steam heating
Tank material	Inox
Pump	✓
Pump -brand and type	Unibloc
Insulated	✓
Chemicals	✓

ADDITIONAL INFO

Chemical tank, Insulated stainless steel (inox), Capacity 35000 litres, 3 Compartments (7500; 20000; 7500), Unibloc pump, ABS, Air suspension, Fruehauf axles, Drum brakes, Shipment dimensions 1160x250x380 cm.