

Fruehauf

Bitumen / heavy oil tank steel 31 m3 / 1 comp

GENERAL

ID number	ONL4547
Brand	Fruehauf
Type	Bitumen / heavy oil tank steel 31 m3 / 1 comp
Chassis number	VFKXXT34TM5NL4547
1st Registration Date	27-04-1992
Country of registration	FR
Dimensions	1120x250x370

POWERTRAIN

ABS 


CHASSIS

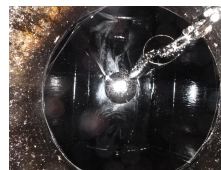
Empty weight	7140
Gross weight	34000
Kingpin height	120 cm

TYRES


Tyre size axle 1	385/65R22.5
Tyre size axle 2	385/65R22.5
Tyre size axle 3	385/65R22.5

AXLES

Number of axles	3
Brand axles	Fruehauf
Drum brake	
Suspension axle 1	Steel suspension
Suspension axle 2	Steel suspension
Suspension axle 3	Steel suspension



TANK

Volume (Liters)	31125
Number of compartments	1
Volume compartments (Liters)	31125
Material code	E 335 D
Tank material	Staal
Pump -brand and type	Lombardini mixer engine
Test pressure	0.45 bar
Maximum work pressure	0.1 bar
Wall thickness	3 mm (rear head), 4.0 mm (front head), 3.2 mm (shell)
Bitumen	

ADDITIONAL INFO

Steel bitumen / heavy oil tank, Capacity 31075 litres, 1 Compartment, Lombardini mixer engine, ABS, Steel suspension, Fruehauf axles, Drum brakes, Shipment dimensions 1120x250x370 cm.