

Fruehauf

Heavy oil/Bitumen tank inox 31 m3 /

ADR/GGVs

GENERAL

ID number	ONL2128
Brand	Fruehauf
Type	Heavy oil/Bitumen tank inox 31 m3 / ADR/GGVs
Chassis number	VFKTF34T1S1NL2128
1st Registration Date	10-05-1996
Country of registration	FRA
Dimensions	1150x250x380

POWERTRAIN

ABS	✓
-----	---

CHASSIS

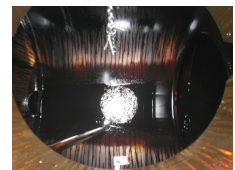
Empty weight	7270
Gross weight	34000
Chassis height	100
Fifth wheel height	120

TYRES

Tyre size axle 1	385/65R22.5
Tyre size axle 2	385/65R22.5
Tyre size axle 3	385/65R22.5

AXLES

Number of axles	3
Brand axles	Fruehauf
Drum brake	✓
Suspension axle 1	Steel suspension
Suspension axle 2	Steel suspension
Suspension axle 3	Steel suspension



SUPERSTRUCTURE

Make superstructure	Fruehauf
---------------------	----------

ADR

ADR	✓
ADR Classes	FL, AT

TANK

Volume (Liters)	31075
Number of compartments	1
Volume compartments (Liters)	31075 (1 comp.)
Tank material	Inox
Fuel	✓

ADDITIONAL INFO

Heavy oil tank, Stainless steel (inox), Bulk capacity 31075 liters, 1 Compartment, With mixer/engine, ABS, Steel suspension, Drum brakes, Fruehauf axles, Tires 385/65R22.5, ADR certificate (valid until 06-06-2013), ADR classes FL/AT, Tank code LGBF, Shipment dimensions 1150x250x380 cm.