

# D.A.F.

## CF 75.310 6x2 fuel tank 20 m3 / 4 comp

### GENERAL

ID number	D625145
Brand	D.A.F.
Type	CF 75.310 6x2 fuel tank 20 m3 / 4 comp
Chassis number	XLRA575PC0E625145
1st Registration Date	11-02-2004
Mileage (Km)	450750
Country of registration	BE
Dimensions	850x250x330

### POWERTRAIN

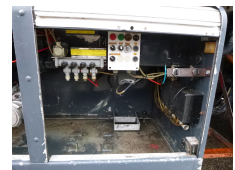
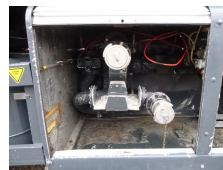
Gearbox type	Manual
Number of gears	12
Euro standard	3
Differential lock	✓
ABS	✓

### CHASSIS

Empty weight	9450
Gross weight	26000
Wheelbase	395 (1-2), 140 (2-3)
Chassis height	100 cm
Fuel Capacity	280 litres

### TYRES

Tyre size axle 1	315/80R22.5
Tyre size axle 2	315/80R22.5
Tyre size axle 3	315/80R22.5



## AXLES

Number of axles	3
Number of driven axles	1
Configuration	6x2
Suspension axle 1	Steel suspension
Suspension axle 2	Air suspension
Suspension axle 3	Air suspension
Liftas as 3	✓
Steering axle Axle 1	✓
Steering axle, Axle 3	✓

## ADR

ADR	✓
ADR tankcode	LGBF
ADR date	10-03-2018
ADR Classes	FL, AT

## CABIN

Cabin Type	Day cabin
Airconditioning	✓

## TANK

Volume (Liters)	20000
Volume compartments (Liters)	5000; 5000; 5000; 5000
Tank material	Aluminium
Pump	✓
Hoses	✓
Fuel	✓

## ADDITIONAL INFO

Stokota aluminium fuel tank, Capacity 20000 litres, 4 Compartments (4 x 5000 litres), Hydraulic pump, Hose reel // Truck Euro 3, Air suspension rear, Tyres 315/70R22.5, Lift axle, Manual gearbox (12-speed), Cruise control, Analogue tachometer, Air conditioning, Shipment dimensions 850x250x330 cm.